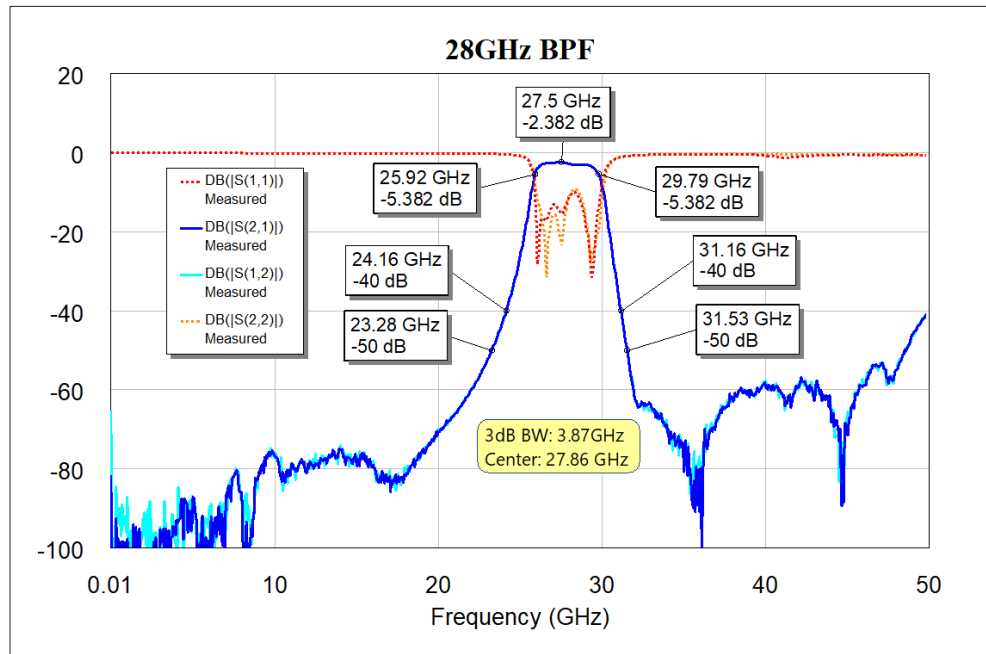




Preliminary
Samples available NOW!

5G and Beyond 28 GHz Bandpass Filters



5G and Beyond

Specification highlights:

- Frequency range 20 – 40+ GHz
- SMT design
- 3-6 poles
- Low insertion loss
- Size less than 7.5 x 4.5 mm
- 50 Ω impedance
- Bandwidths up to 40%

Key Features

- Patented Air Cavity design
- High-Q with low insertion loss
- Unwanted RF parasitics are minimized
- Highly scalable lithographic process
- Fully shielded
- Frequency stable over temperature

Custom Packaging

Packaging options are customizable to the application. Common packaging interconnects include SMT and wire bonded approaches.

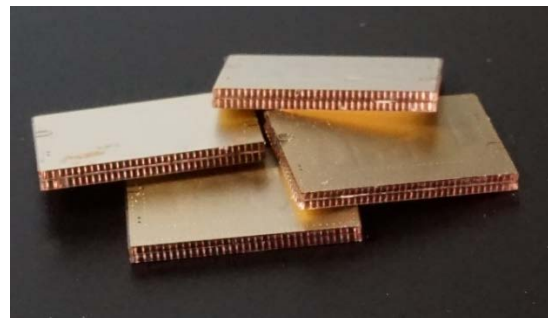


Figure 1. 28 GHz surface mount bandpass filters.

Preliminary
Samples available NOW!

5G and Beyond 28 GHz Bandpass Filters

Physical Dimensions



Figure 2. 28 GHz surface mount bandpass filters.

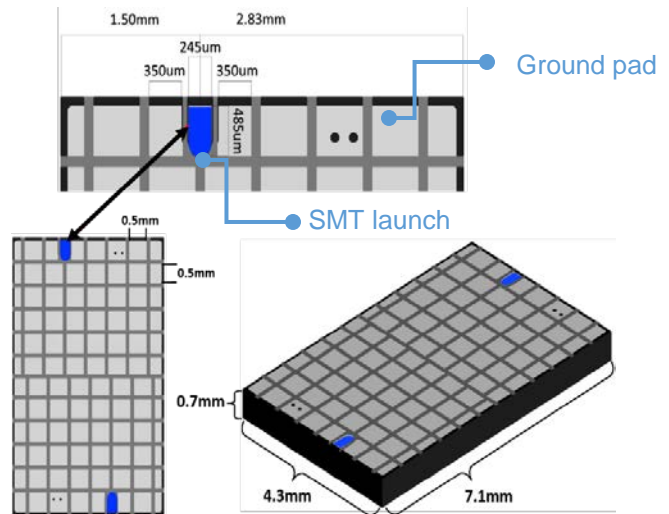


Figure 3. Dimensions and details for SMT launch and ground pads.

Specifications

Parameters	Typical Performance
Passband (GHz)	27 to 29
Insertion Loss @ f_c (dB)	2.3 dB @ 25°C
Impedance	50 Ω
Attenuation (dB)	30 min @ 20000-25300 MHz 30 min @ 30200-35000 MHz
Passband Return Loss (dB)	10 min @ 27000-28000 MHz
Size (LxWxH)	7.1 x 4.3 x 0.7 mm
Operating Temperature	-55°C to + 125°C
Mounting Options	SMT
Compliance	ROHS

Electrical specifications based on typical performance at room temperature. Insertion loss shall vary ± 0.5 dB over temperature.